

Understanding Your PSAT/NMSQT Results

4 Major Parts of Your PSAT/NMSQT Results

Your Scores

Your Skills

Your Answers

Next Steps

3 Test Sections

Critical Reading

Mathematics

Writing Skills

The image shows a sample PSAT/NMSQT score report page. The page is divided into several sections, with orange callout boxes highlighting the following areas:

- 4 Major Parts of Your PSAT/NMSQT Results:** This section is highlighted at the top of the page and includes:
 - Your Scores
 - Your Skills
 - Your Answers
 - Next Steps
- 3 Test Sections:** This section is highlighted in the middle of the page and includes:
 - Critical Reading
 - Mathematics
 - Writing Skills

At the bottom of the page, there is a "Next Steps" section with the following text:

Next Steps

Go online to see your reported test scores, find out if you qualify for college credit, and learn more about taking a practice test.

Take the next step today! Go to www.collegeboard.com/quickstart and sign in using your code below.

My College Link Code: **A02670146P**

Take a practice test.

Your Scores

Score

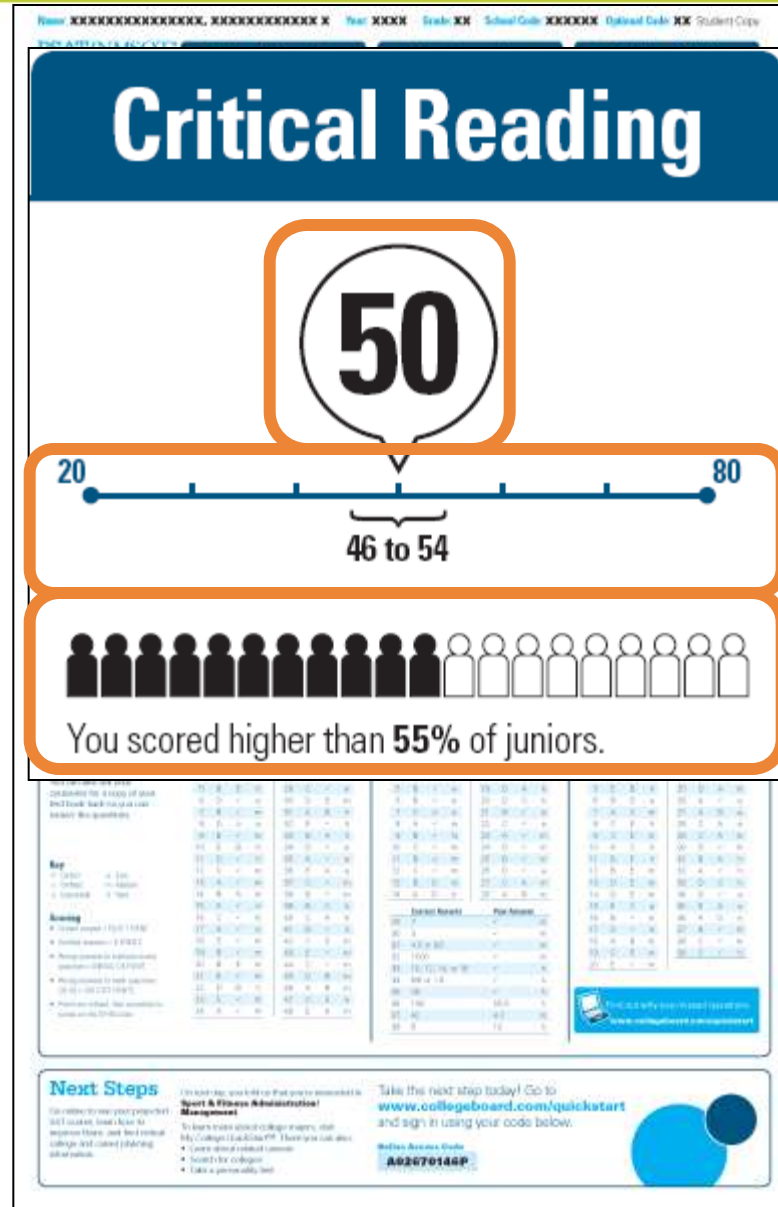
You can see your projected SAT score online in My College QuickStart (www.collegeboard.com/quickstart).

Score Range

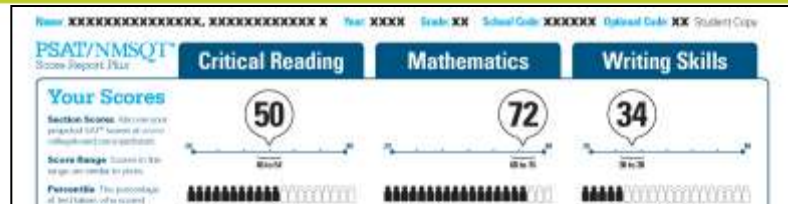
Percentile

If you are a junior, your scores are compared to those of other juniors.

If you are a sophomore or younger student, your scores are compared to those of sophomores.



National Merit Scholarship Corporation Information



National Merit Scholarship Corporation

National Merit Scholarship Corporation (NMSC) uses a Selection Index based on PSAT/NMSQT® scores as an initial screen of over 1.5 million students who enter its scholarship programs. (See reverse for more information.)

Your Selection Index
Sum of scores in critical reading, mathematics and writing skills.
156

Percentile
Compares your performance with college-bound juniors.
47

Entry Requirements

(Information you provided on your answer sheet.)

High school student: **Yes** U.S. citizenship: **Yes**

Year to complete high school and enroll full-time in college: **2011**

Years to be spent in grades 9–12: **4**

Eligibility Information

If your Selection Index places you among the 55,000 high scorers who qualify for program recognition, you will be notified next September.

The Selection Index is the sum of your critical reading, mathematics and writing skills scores.

If it has an asterisk, you do not meet all of the eligibility requirements for the competition.

The Percentile compares your performance to that of other college-bound juniors.

The Entry Requirements section displays information you provided on your answer sheet.

Take the next step today! Go to www.collegeboard.com/quickstart and sign in using your code below.

MyPSAT/NMSQT Code: **A02670146P**

Your Answers

You will get your test book back with your PSAT/NMSQT results, so that you can review the questions.

You can also review each test question in My College QuickStart.

Critical Reading **Mathematics** **Writing Skills**

Score: **72** Score: **34**

Question	Correct Answer	Your Answer	Difficulty
1	A	✓	e
2	B	✓	e
3	A	C	m
4	C	A	h
5	B	E	h
6	D	✓	e
7	B	✓	m
8	D	o	e
9	B	✓	m
10	E	B	h
11	D	✓	h
12	C	✓	m
13	A	✓	m
14	B	A	m
15	A	✓	e
16	C	✓	m
17	A	✓	e
18	E	✓	m
19	B	✓	m
20	B	E	m
21	E	✓	m
22	D	B	h
23	E	✓	m
24	A	✓	m

Grid-in answer key: 1-10: A, B, C, D, E, F, G, H, J, K; 11-20: M, P, Q, R, S, T, U, V, W, X; 21-24: Y, Z, AA, AB.

Your Answers: Student-Produced Responses

Some of the math problems required you to grid in answers instead of selecting an option. For these questions, you will see the correct answer(s) written out.

PSAT/NMSQT Score Report Plus

Critical Reading **Mathematics** **Writing Skills**

Your Scores

Section Score: 50 (Critical Reading), 72 (Mathematics), 34 (Writing Skills)

Score Range: 10-38 (CR), 10-38 (M), 10-38 (WS)

Percentile: You scored higher than 55% of peers (CR), 40% of peers (M), 23% of peers (WS)

National Merit Scholarship Corporation

Your Selection Index: 156

Eligibility Information: Yes

Your Skills

Understanding the Meaning of Words: 10 of 12 questions correct (83%)

Number & Operations: 5 of 12 questions correct (42%)

Algebra & Functions: 2 of 12 questions correct (17%)

Geometry & Data Relationships Between Words: 3 of 12 questions correct (25%)

Words & Phrases Used to Modify or Compare: 1 of 12 questions correct (8%)

Section Answer Grid

A02670146P

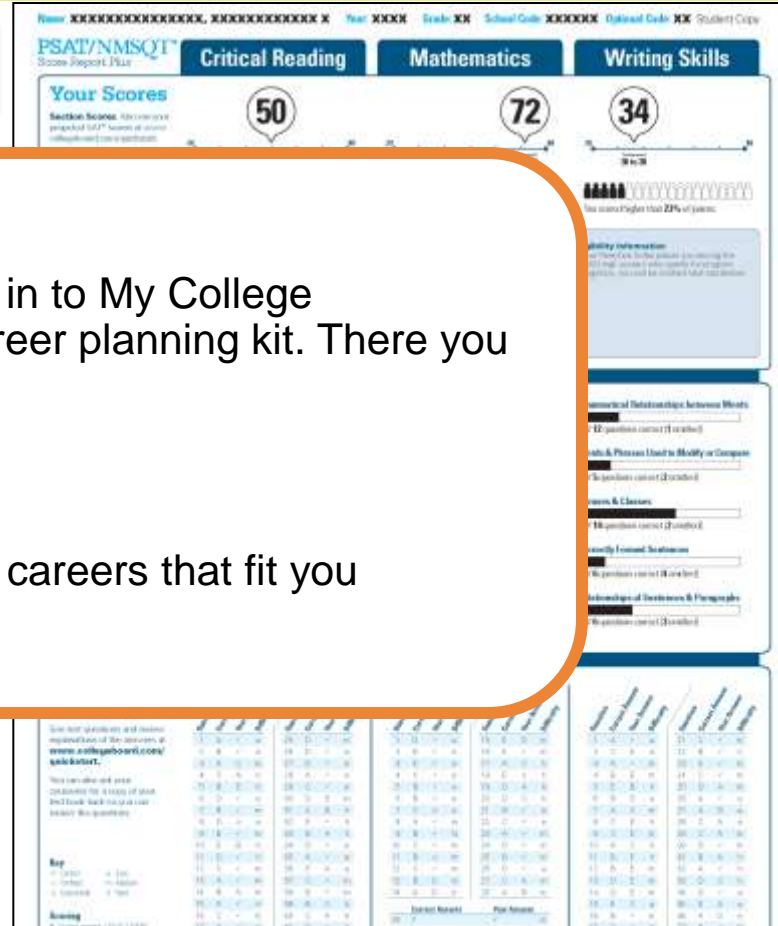
	Correct Answer	Your Answer	
29	7	✓	m
30	3	✓	m
31	4.5 or 9/2	✓	m
32	1000	✓	m
33	10, 12, 14, or 16	✓	h
34	8/5 or 1.6	✓	h
35	29	✓	h
36	108	50.9	h
37	42	4.2	m
38	8	10	h

Next Steps

Go online to view your report at www.collegeboard.com/quickstart

Sign in using your code below: **A02670146P**

Next Steps



What's next?

Use the access code on your report to log in to My College QuickStart, a personalized college and career planning kit. There you can:

- Search for colleges
- Get a personalized SAT study plan
- Take a personality test to find majors and careers that fit you

www.collegeboard.com/quickstart

Next Steps

Go online to see your projected SAT scores, learn how to improve them, and find critical college and career planning information.

On test day, you told us that you're interested in **Sport & Fitness Administration/Management**

To learn more about college majors, visit My College QuickStart™. There you can also:

- Learn about related careers
- Search for colleges
- Take a personality test

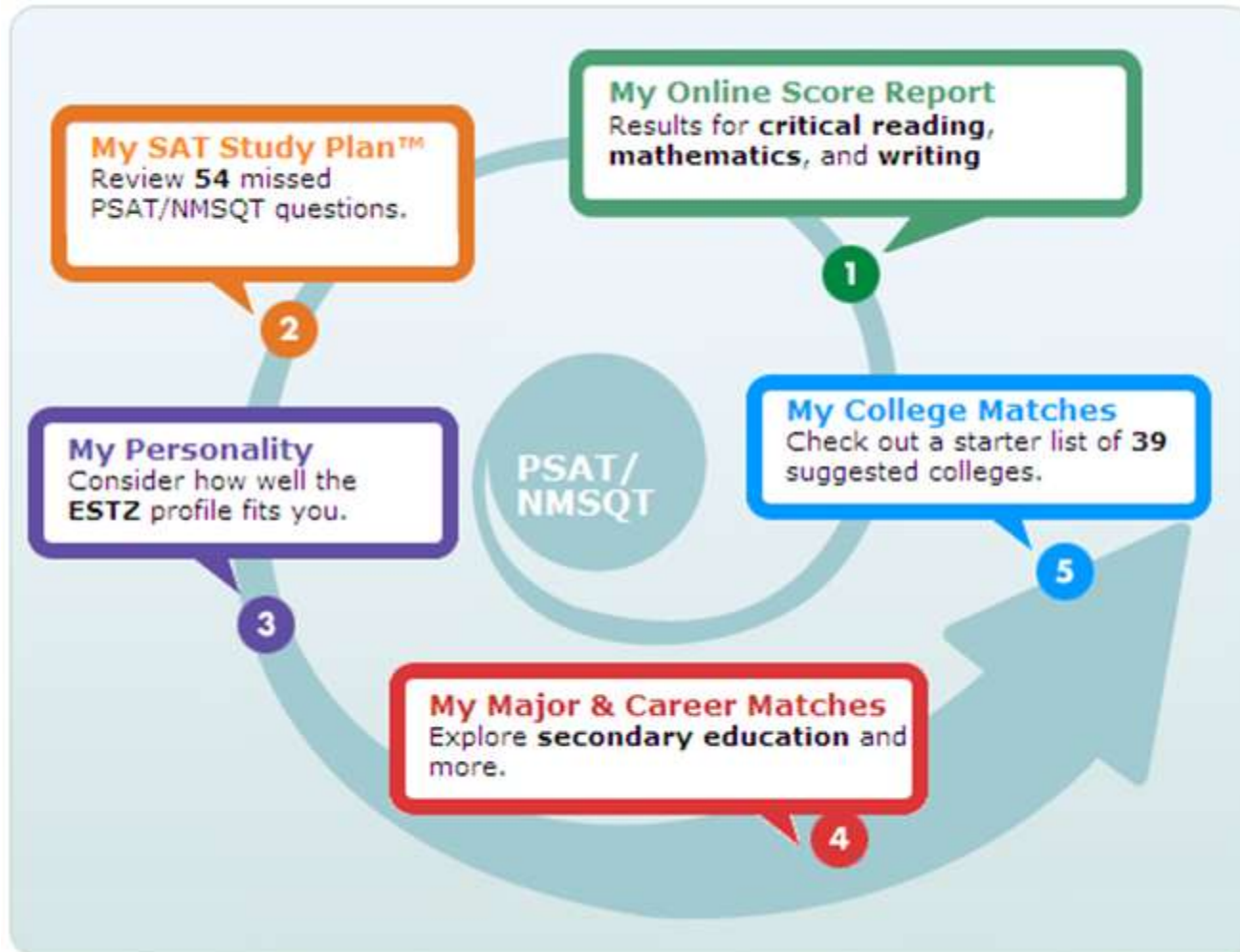
Take the next step today! Go to www.collegeboard.com/quickstart and sign in using your code below.

Online Access Code

A02670146P



My College QuickStart



My College QuickStart

My Online Score Report

- Projected SAT® score ranges
- State percentiles
- You can filter questions
- Questions and answer explanations

My College Quickstart

Home > My Organizer > My College QuickStart > My Online Score Report:

My Online PSAT/NMSQT Score Report

Critical Reading Mathematics Writing Skills

Your Score

Section Score **50**

Score Range **46 to 54**

Projected SAT Score Range
470 to 570

National Percentile You scored higher than 72% of juniors in the nation

State Percentile You scored higher than 80% of juniors in your state

Your Skills **Your Answers**

Filter your answers by

-- skills --

-- difficulty --

Correct answers (✓) incorrect answers omitted

	Correct Answer	Your Answer	Difficulty	Content Skill	Process Skill
01	D	✓	hard	Data, Statistics + Probability	Connections
02		omitted	easy	Number + Operations	Representation
03	C	✓	medium	Algebra + Functions	Problem Solving

My College QuickStart

My SAT Study Plan™

- Personalized skills to improve
- SAT practice questions
- An official SAT practice test

My College Quickstart

Home > My Organizer > My College QuickStart > My Online Score Report.

My SAT Study Plan

Study Plan Home | Meet the SAT | Critical Reading | Mathematics | Writing | **Practice Test**

Review & Practice | My Skills Feedback | Get Test-Taking Advice

My Skills Feedback

This feedback was created especially for you, based on your PSAT/NMSQT results. Select a skill to see how you answered each question and review the answer explanations. To improve your score, focus on the skills where you need more work.

Content Skills

- Connections*
- Data, Statistics + Probability
- Reasoning***
- Number & Operations

Process Skills

- Problem Solving*
- Geometry & Measurement
- Communication*
- Algebra & Functions
- Representation

* These math-only process skill groups were not included on your score Report Plus.

Skill Group: Reasoning (46 - 54)

3 of 8 correct (0 omitted)

definition	answers	#	questions
Short definition of skill goes here lorem ipsum sic amet dolor prest- dignation y uno scotai t'kinena gorant pelleresque.	Omitted	0	--
	Incorrect	5	01, 17, 23, 26, 37 (view all)
	Correct	3	07, 12, 14 (view all)

Includes: Logical Reasoning, Proofs, Counterexamples.

[Practice Now](#)

My College QuickStart

INSIGHTS
I.D. ME
EXPLORE MAJORS
FIND A COLLEGE
RESEARCH CAREERS

I.D. ME

Introduction

QuickStarts

ORA Personality Profiler®

View My Profile

THE TROUBLESHOOTERS

ISTA

ISFA

ESTA

ESFA

THE TRADITIONALISTS

ESTZ

ESFZ

ISTZ

ISFZ

THE CATALYSTS

INFA

ENFA

ENFZ

INFZ

The Traditionalists

introverting
feeling
sensing
organizing

▶ **ISFZ The Provider**

ISFZs are responsible, caring, reserved, and cooperative. As an ISFZ you have a modest style of helping others in orderly and practical ways. You believe it is important to follow rules and laws; similarly, you adhere to routine and prefer to see traditions preserved with little change. You are prone to worry about things beyond your control and may appear to be less confident because of your tendency to become stressed or agitated and not ask for help.

About 6%
of MyRoad
participants

You like to be with a few close friends and family members and to offer personal support wherever and whenever needed. You are good at coordinating tasks and activities for everyone but may become overburdened by taking on other people's problems. Likewise, you don't ask for the recognition you would like to have. You are quietly loyal to family, friends, and groups and institutions that are important to you, and you hope others will be as loyal in return. You avoid interpersonal conflict at all costs.

As an ISFZ you are an organized and focused learner who is good at memorizing facts and details related to people. You reliably meet deadlines and obligations. You excel at coordinating and scheduling your own activities and keep yourself and your belongings neat and in good order. You prefer to work on projects and tasks that are useful in a practical way.

▶ **Your Strengths Include...**

- A practical and dependable nature.

My College QuickStart

My College Matches

- Starter list of colleges
- Criteria to customize search
- Ability to save searches

City University of New York: Hunter College
New York, New York
College Board code: 2301

[Add to List](#)
[Compare](#)
[Find Similar](#)
[Map It](#)
[Print Full Profile](#)
[Send to a Friend](#)

At a Glance Deadlines	Admission SAT®, AP®, CLEP®	Cost & Financial Aid Majors	Academics & Support Housing & Campus Life	Sports International Students
---	--	---	---	---

Main Address
 695 Park Avenue
 New York, NY 10065
 (212) 772-4000
www.hunter.cuny.edu

Admission Office
 695 Park Avenue
 New York, NY 10065
 (212) 772-4490
admissions@hunter.cuny.edu
 Contact: William Zlata
 Director of Admissions

Type of School
 Public
 Liberal Arts College
 Four-year
 Coed
 Percent applicants admitted: 28%
 Regionally Accredited
 Middle States Association of Colleges and Schools
 College Board member

Calendar: Semester
Degrees offered:

- Bachelor's
- Master's

Setting
 Urban setting
 Very large city (over 500,000)
 Commuter campus

Size
 Total undergrads: 15,698
 First-time degree-seeking freshmen: 2,042
 Degree-seeking undergrads: 14,709
 Graduate enrollment: 5,560

My College QuickStart

INSIGHTS
I.D. ME
EXPLORE MAJORS
FIND A COLLEGE
RESEARCH CAREERS

CIVIL ENGINEERING

[Overview](#) | [High School Courses](#) | [College Courses](#) | [Career Connection](#) | [Perspectives](#)

Majors A-Z

My Interest ?

High
Medium
None

Updated: 8-31-2009

Topics


Construction Engineering & Management

Environmental Engineering

Geological Engineering

Geotechnical Engineering

Mining Engineering



Overview


The ancient Egyptians built pyramids and levees. The Romans built aqueducts and the Colosseum. The Persians and ancient Greeks undertook massive building projects. Civil engineering has been practiced for thousands of years.

Civil engineers plan, design, build, and repair just about anything you can think of. That includes buildings, bridges, dams, tunnels, highways, stadiums, sewage treatment plants, power plants, airports, and even satellites. These days they're also in demand to repair the damage caused by natural disasters such as earthquakes, hurricanes, and floods. And our crumbling public structures, from bridges to tunnels, all need civil engineers to repair them.

Civil engineers plan, design, build, and repair just about anything you can think of.

Civil engineers specialize in different areas. Transportation engineers, for example, tackle problems like traffic jams and air travel safety. Water resources engineers work to control the flow of rivers and ensure clean drinking water.

As a civil engineering major, you'll take classes in several fields before focusing on one. But you'll find there's overlap in some course work. For instance, you'll learn how to build structures that can stand up to earthquakes in both geotechnical and structural engineering. In a geotechnical engineering course, you'll focus on soil structure and foundation design. But when you study structural engineering, you'll be more concerned with designing



My College QuickStart

Log in to your personalized account at

www.collegeboard.com/quickstart