

Litchfield, CT Historical Enrollment

School District: Litchfield, CT

1/19/2016

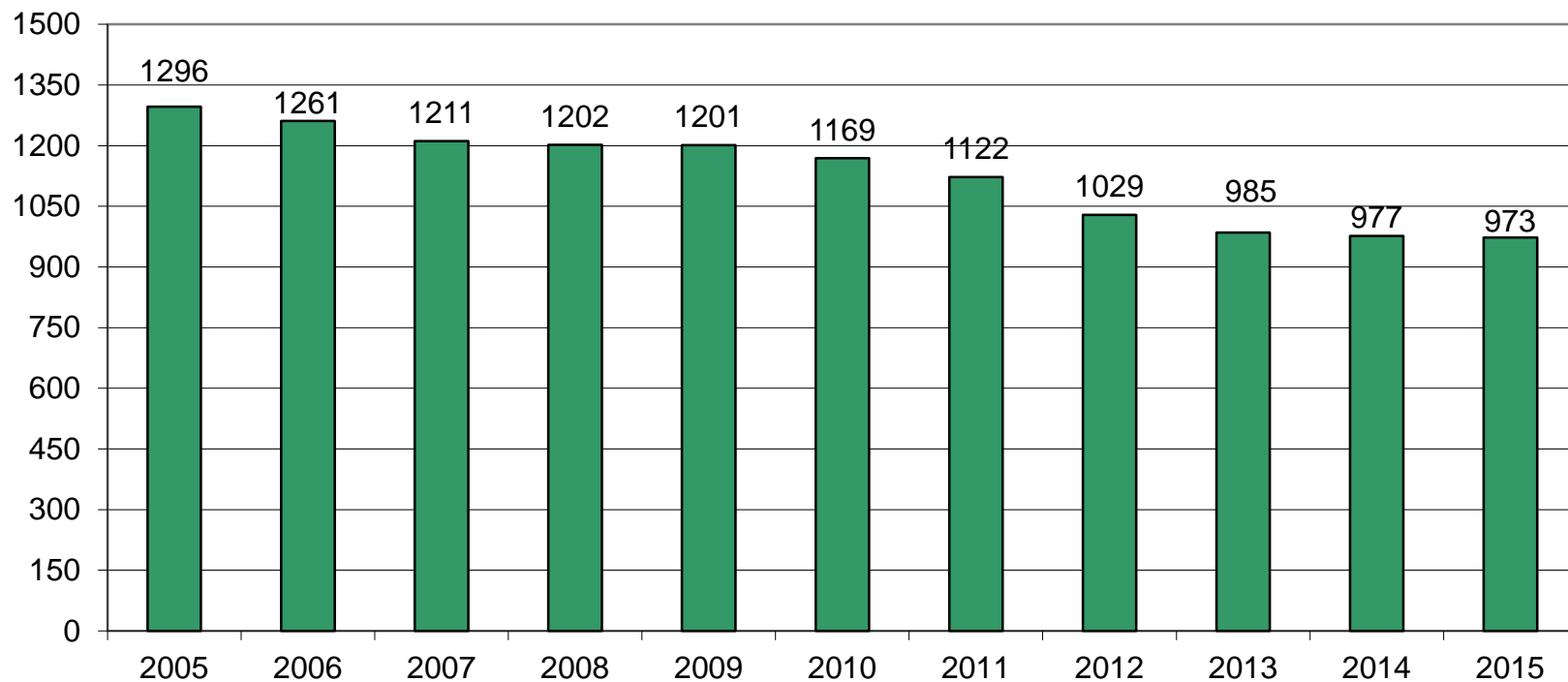
Historical Enrollment By Grade																			
Birth Year	Births	School Year	PK	K	1	2	3	4	5	6	7	8	9	10	11	12	UNGR	K-12	PK-12
2000	70	2005-06	22	75	84	84	83	73	86	114	120	125	109	124	102	95	0	1274	1296
2001	61	2006-07	17	79	79	88	89	81	75	86	114	115	115	104	110	109	0	1244	1261
2002	70	2007-08	17	73	75	80	92	88	85	77	90	115	100	111	97	111	0	1194	1211
2003	76	2008-09	19	90	80	77	82	97	96	83	75	94	107	95	109	98	0	1183	1202
2004	71	2009-10	19	77	88	82	78	88	98	103	91	80	94	105	89	109	0	1182	1201
2005	58	2010-11	19	76	71	88	87	79	92	97	104	94	76	94	102	90	0	1150	1169
2006	66	2011-12	19	74	70	70	83	92	81	90	94	105	76	69	94	105	0	1103	1122
2007	64	2012-13	15	55	71	67	72	82	91	78	89	86	91	71	71	90	0	1014	1029
2008	53	2013-14	19	58	54	70	67	73	84	88	85	87	80	85	67	68	0	966	985
2009	65	2014-15	27	62	61	53	69	68	77	84	90	88	71	74	84	69	0	950	977
2010	50	2015-16	39	59	66	57	52	73	70	78	85	91	72	65	79	87	0	934	973

Historical Enrollment in Grade Combinations									
Year	K-3	4-6	K-6	K-8	5-8	6-8	7-8	7-12	9-12
2005-06	326	273	599	844	445	359	245	675	430
2006-07	335	242	577	806	390	315	229	667	438
2007-08	320	250	570	775	367	282	205	624	419
2008-09	329	276	605	774	348	252	169	578	409
2009-10	325	289	614	785	372	274	171	568	397
2010-11	322	268	590	788	387	295	198	560	362
2011-12	297	263	560	759	370	289	199	543	344
2012-13	265	251	516	691	344	253	175	498	323
2013-14	249	245	494	666	344	260	172	472	300
2014-15	245	229	474	652	339	262	178	476	298
2015-16	234	221	455	631	324	254	176	479	303

Historical Percentage Changes			
Year	K-12	Diff.	%
2005-06	1274	0	0.0%
2006-07	1244	-30	-2.4%
2007-08	1194	-50	-4.0%
2008-09	1183	-11	-0.9%
2009-10	1182	-1	-0.1%
2010-11	1150	-32	-2.7%
2011-12	1103	-47	-4.1%
2012-13	1014	-89	-8.1%
2013-14	966	-48	-4.7%
2014-15	950	-16	-1.7%
2015-16	934	-16	-1.7%
Change		-340	-26.7%

Litchfield, CT Historical Enrollment

PK-12, 2005-2015



Litchfield, CT Projected Enrollment

School District: Litchfield, CT

1/19/2016

Enrollment Projections By Grade*																				
Birth Year	Births		School Year	PK	K	1	2	3	4	5	6	7	8	9	10	11	12	UNGR	K-12	PK-12
2010	50		2015-16	39	59	66	57	52	73	70	78	85	91	72	65	79	87	0	934	973
2011	57		2016-17	40	60	61	64	56	54	76	70	81	86	78	67	65	80	0	898	938
2012	43		2017-18	41	45	62	59	63	58	56	75	72	82	74	72	67	66	0	851	892
2013	54	(est.)	2018-19	42	56	46	60	58	65	60	56	78	73	70	68	72	68	0	830	872
2014	54	(est.)	2019-20	43	56	58	44	59	60	67	60	58	79	62	65	68	73	0	809	852
2015	51	(est.)	2020-21	44	54	58	56	44	61	62	67	62	59	68	57	65	69	0	782	826
2016	52	(est.)	2021-22	45	54	56	56	55	45	63	62	69	63	50	63	57	66	0	759	804
2017	51	(est.)	2022-23	46	53	56	54	55	57	47	63	64	70	54	46	63	57	0	739	785
2018	52	(est.)	2023-24	47	55	55	54	53	57	59	47	65	65	60	50	46	63	0	729	776
2019	52	(est.)	2024-25	48	54	57	53	53	55	59	59	49	66	56	55	50	46	0	712	760
2020	52	(est.)	2025-26	49	54	56	55	52	55	57	59	61	50	56	52	55	50	0	712	761

*Projections should be updated on an annual basis.

Based on an estimate of births

Based on children already born

Based on students already enrolled

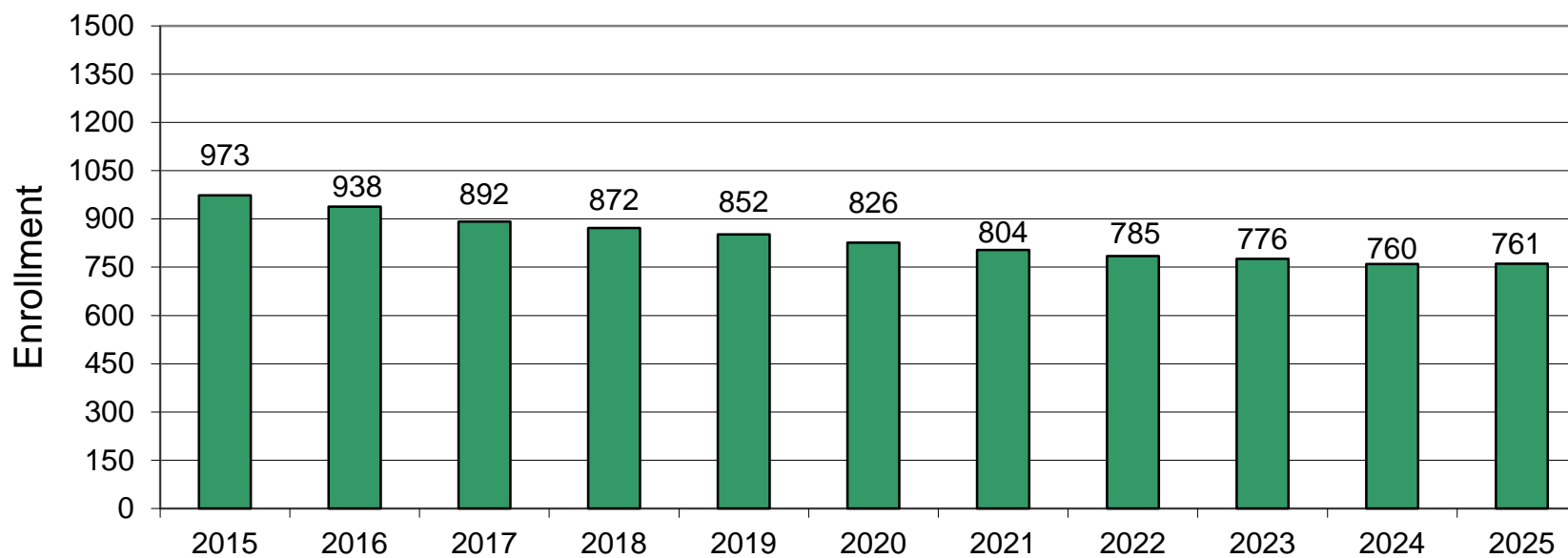
Projected Enrollment in Grade Combinations*									
Year	K-3	4-6	K-6	K-8	5-8	6-8	7-8	7-12	9-12
2015-16	234	221	455	631	324	254	176	479	303
2016-17	241	200	441	608	313	237	167	457	290
2017-18	229	189	418	572	285	229	154	433	279
2018-19	220	181	401	552	267	207	151	429	278
2019-20	217	187	404	541	264	197	137	405	268
2020-21	212	190	402	523	250	188	121	380	259
2021-22	221	170	391	523	257	194	132	368	236
2022-23	218	167	385	519	244	197	134	354	220
2023-24	217	163	380	510	236	177	130	349	219
2024-25	217	173	390	505	233	174	115	322	207
2025-26	217	171	388	499	227	170	111	324	213

Projected Percentage Changes			
Year	K-12	Diff.	%
2015-16	934	0	0.0%
2016-17	898	-36	-3.9%
2017-18	851	-47	-5.2%
2018-19	830	-21	-2.5%
2019-20	809	-21	-2.5%
2020-21	782	-27	-3.3%
2021-22	759	-23	-2.9%
2022-23	739	-20	-2.6%
2023-24	729	-10	-1.4%
2024-25	712	-17	-2.3%
2025-26	712	0	0.0%
Change		-222	-23.8%

See "Reliability of Enrollment Projections" section of accompanying letter.
Projections are more reliable for Years #1-5 in the future than for Years #6 and beyond.

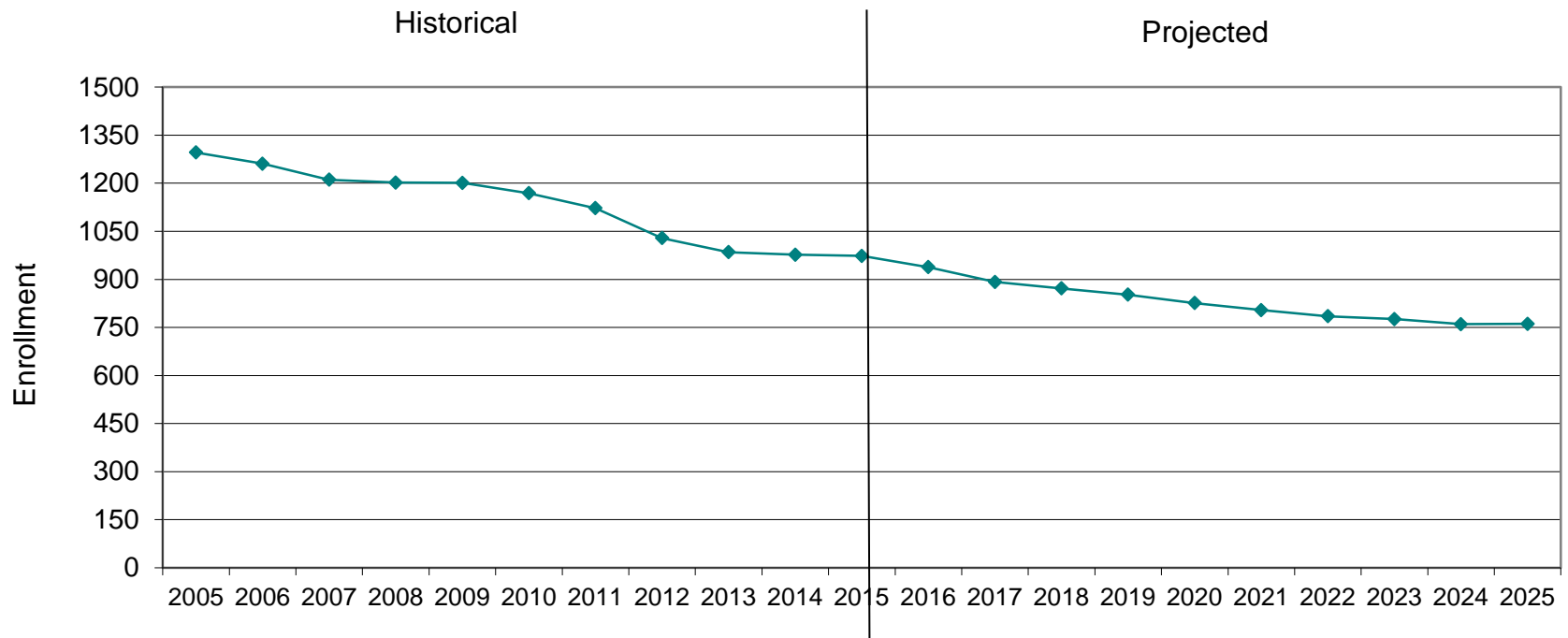
Litchfield, CT Projected Enrollment

PK-12 TO 2025 Based On Data Through School Year 2015-16

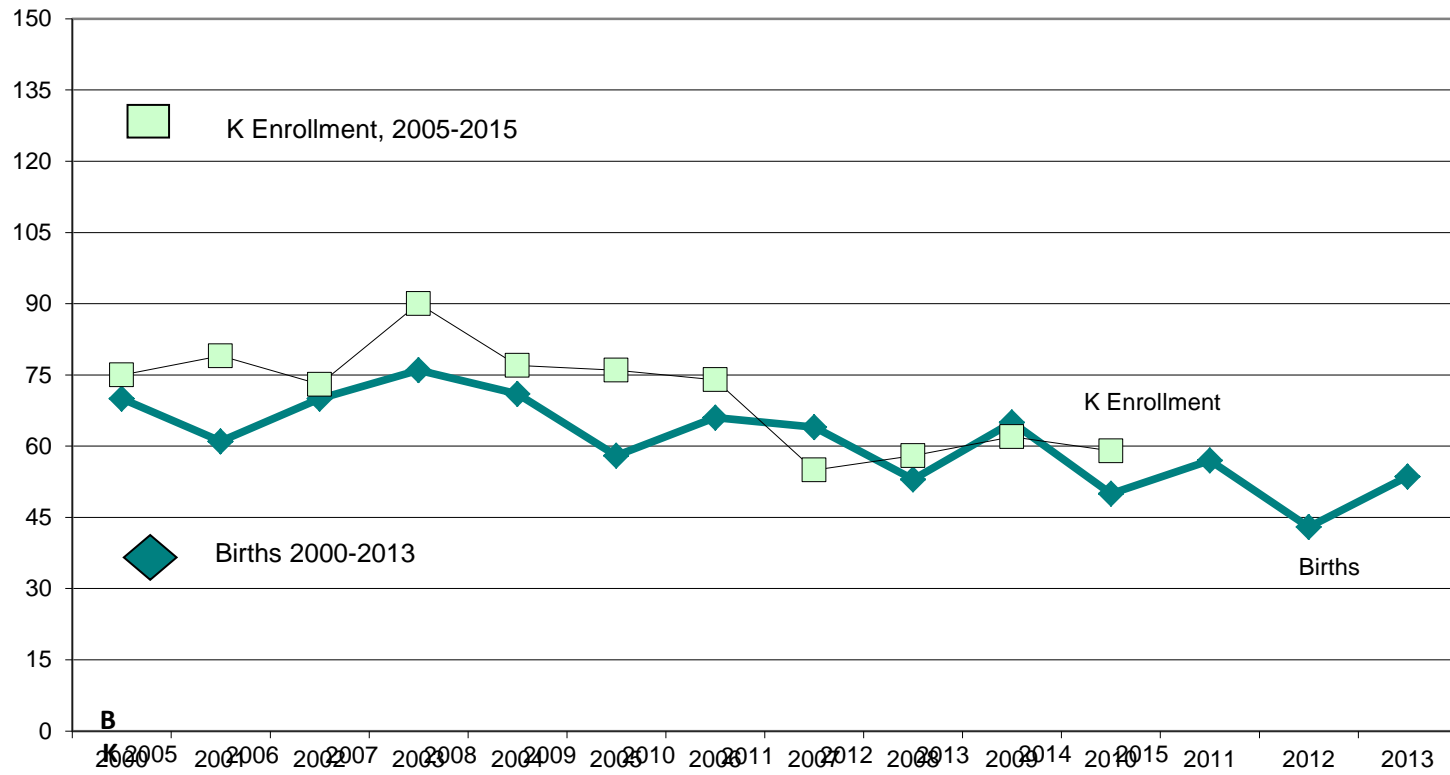


Litchfield, CT Historical & Projected Enrollment

PK-12, 2005-2025



Litchfield, CT Birth-to-Kindergarten Relationship



Litchfield, CT Additional Data

Building Permits Issued		
Year	Single-Family	Multi-Units
2005	49	0
2011	5	0
2012	9	0
2013	13	0
2014	13	0
2015	n/a	n/a

Enrollment History		
Year	Voc-Tech 9-12 Total	Non-Public K-12 Total
2005-06	n/a	176
2011-12	n/a	n/a
2012-13	n/a	n/a
2013-14	n/a	n/a
2014-15	34	n/a
2015-16	53	n/a

Source: HUD and Building Department

Residents in Non-Public Independent and Parochial Schools (General Education)														
Enrollments as of Oct. 1	K	1	2	3	4	5	6	7	8	9	10	11	12	K-12 TOTAL
	n/a	n/a	n/a	n/a	n/a	n/a	n/a	n/a	n/a	n/a	n/a	n/a	n/a	n/a

K-12 Home-Schooled Students	
2015	n/a

K-12 Residents "Choiced-out" or in Charter or Magnet Schools	
2015	3

K-12 Special Education Outplaced Students	
2015	n/a

K-12 Choiced-In, Tuitioned-In, & Other Non-Residents	
2015	1

The above data were used to assist in the preparation of the enrollment projections. If additional demographic work is needed, please contact our office.